



SPRAYER INSPECTION IN LUXEMBOURG

**SPISE 8th European Workshop
Naaldwijk 2-4 May 2023**



LE GOUVERNEMENT
DU GRAND-DUCHÉ DE LUXEMBOURG
Ministère de l'Agriculture, de la Viticulture
et du Développement rural



Luxembourg, a small founder-country of EU at the heart of western Europe

- **Total area in km²: 2586**
- **Utilized agricultural area in ha: 130000**
- **Wineyards in ha: 1250 (249 winegrowers)**
- **Total nbr of holdings: 1843**
- **Livestock (2022):**

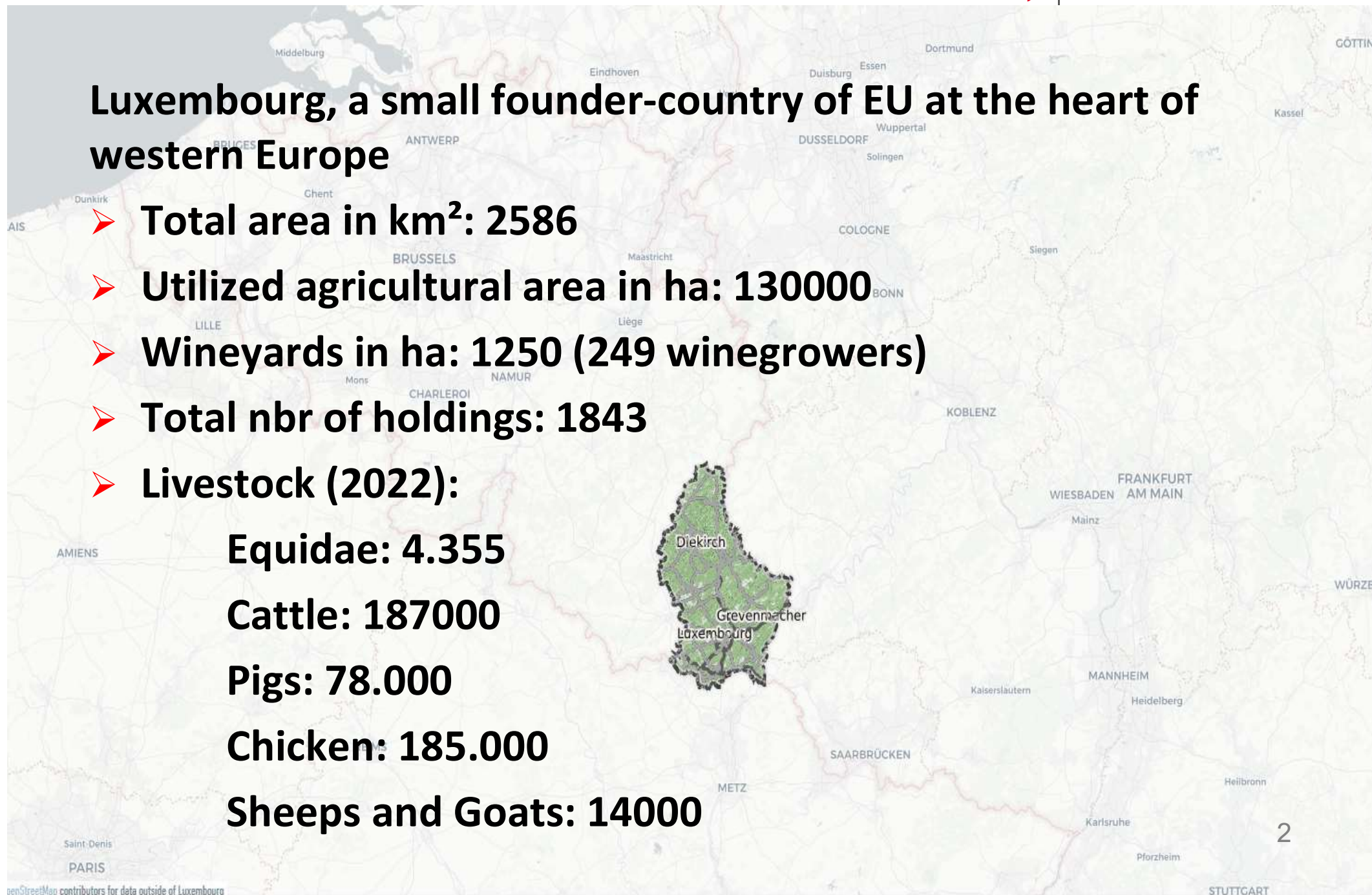
Equidae: 4.355

Cattle: 187000

Pigs: 78.000

Chicken: 185.000

Sheeps and Goats: 14000





Agricultural holdings by size classes

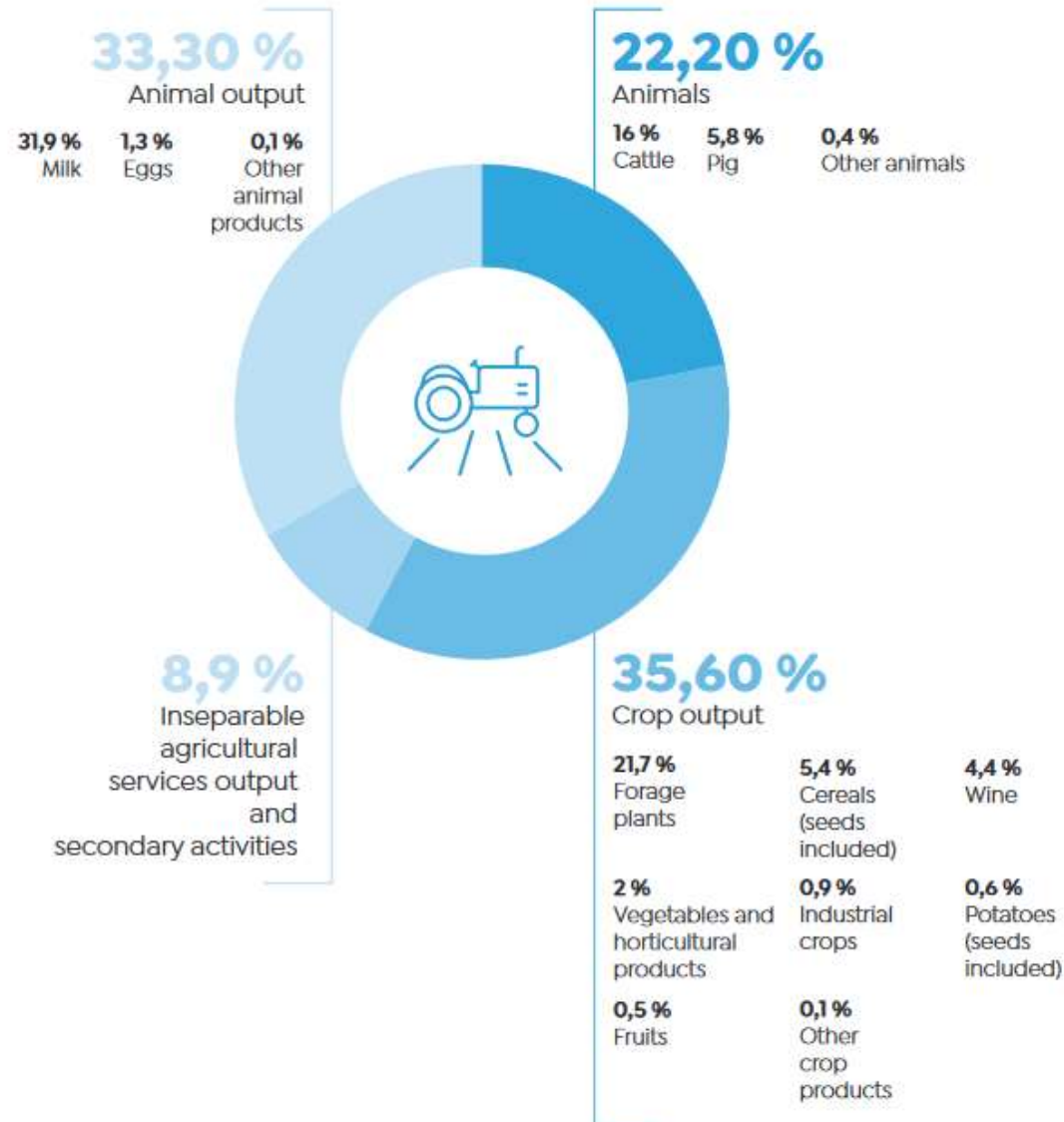
Frequency: Annual

	Time period	2015	2016	2017	2018	2019	2020	2021	2022
Specification									
Holdings in the census *		2 022	1 965	1 943	1 906	1 872	1 881	1 869	1 843
↳ Holdings smaller than 2 ha		185	172	170	160	164	184	177	169
↳ Holdings 2 ha and more		1 837	1 793	1 773	1 746	1 708	1 697	1 692	1 674
↳ ↳ Holdings from 2 to less than 5 ha		139	135	119	126	119	123	128	135
↳ ↳ Holdings from 5 to less than 10 ha		176	169	181	167	152	158	158	144
↳ ↳ Holdings from 10 to less than 20 ha		164	163	153	150	156	156	151	149
↳ ↳ Holdings from 20 to less than 30 ha *		123	107	117	114	114	101	94	89
↳ ↳ Holdings from 30 to less than 50 ha		195	199	189	178	174	170	175	178
↳ ↳ Holdings from 50 to less than 100 ha *		573	538	526	513	483	468	468	458
↳ ↳ Holdings of 100 ha and more		467	482	488	498	510	521	518	521

© Agricultural holdings by size classes STATEC



PART OF THE DIFFERENT PRODUCTIONS IN THE TOTAL VALUE OF THE AGRICULTURAL PRODUCTION 2019





- introduced in 1998 as a mandatory commitment for AECM-schemes (2 pillar CAP)
- large cover of agricultural holdings due to 92-95% participation in agri-environment measures (AECM)
- German test equipment supplier → taking over the german standards (mandatory in Germany until SUD-directive)





- Small numbers, but large varieties of PAE's
- Nbr of PAE in use (2017):
 - 900 boom sprayers
 - 280 sprayers for bush and field crops
 - whole range of PAE in use, very often in small numbers (granulators, dusters, trains, drones,....)



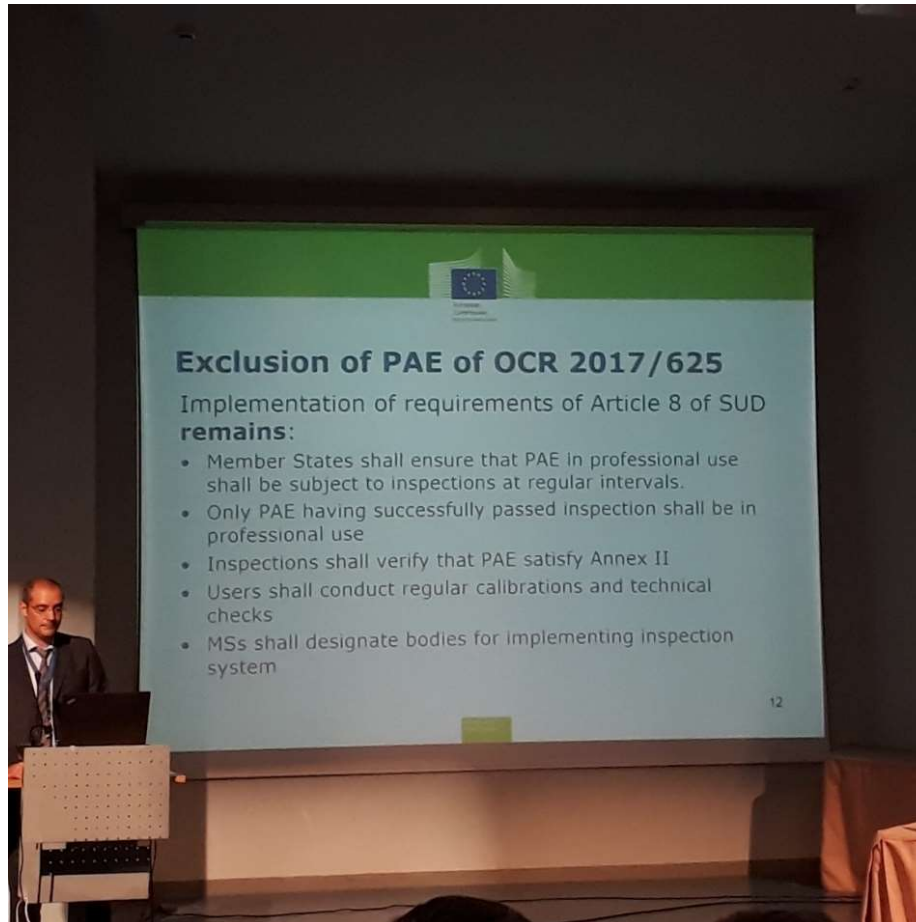


- First inspection: after 3 years, periodical checks in 3 year-cyclus
- Horizontal distribution for boom sprayers, nozzle flow-rate for 3D-sprayers
- Test-facilities organized by government at dealer-locations: win-win in case of minor defects





➤ National implementation of SUD



Spise congress-Athens 2018



SUD-directive (2009/128/EC): major changes and challenges

- Implementation through national law in 2014
- Specific regulations for the different topics
- All PAE in professional use to be tested, no more limited to CAP-premia beneficiaries
- Regular calibrations and checks to be done beside official controls: how to organise this?



SUD-directive (2009/128/EC): challenges and problems

Problems:

- LU as a small country without any research an national support
- How to identify professional users

Solution:

- SPISE initiative (<http://spise.julius-kuehn.de>)
- Technical support by BTFS
- Mutual recognition with neighbor countries



- LSG: Seed-treatment: 1 cooperative with 1 station, checks every 3 years: how to manage, how to get experience???





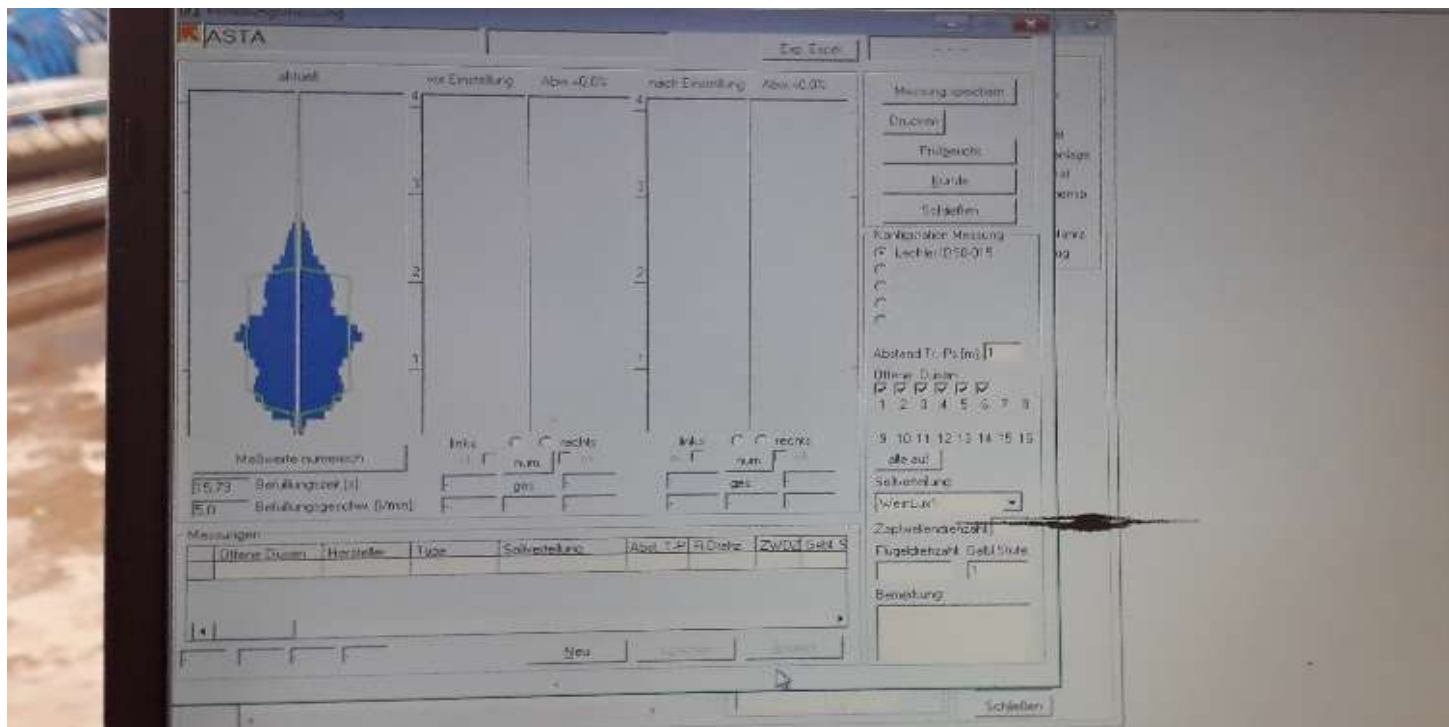
- Synplants: Potato-seed-treatment: 1 cooperative with 1 station, checks every 3 years: how to manage, how to get experience???





Until 2016:

- horizontal distribution for boom sprayers with low risk of drift
- Nozzle flow-rate checks for 3D sprayers with high risk of drift and very often no testing at factory





From 2016:

- vertical distribution for 3D sprayers mandatory for LU
- New patternator test-facilities for 3D-sprayers
- Calibrations and adjustments as a service for growers





Further service provisions:

- Phyto-license for users mandatory, but very often not very fruitful and sustainable in terms of education
- Sprayer inspection workshops offer a good opportunity to give some information





SUD-Audits and new SUR proposals

- Audit SUD : DG(SANTE) 2021-7297 in april 2021 No recommendations cc art 8

New SUR-proposals

- LU open for new aspects in the proposal
 - i. National inventory of all PAE's in use
 - ii. Calibration of PAEs
 - iii. LU-request for mandatory testing within 6 months



General conclusions:

- SPISE initiatives help small countries to implement complex technical directives
- There is much evidence about handling PAE and PPP's in general, but the gap between what is known and should be done on one hand and the reality on the handling at farm-level is still very big.





Thanks for listening!

PELT Pascal

Dipl.-Ing. - Head of Unit

pascal.pelt@asta.etat.lu

00352457172-291

<https://agriculture.public.lu>