

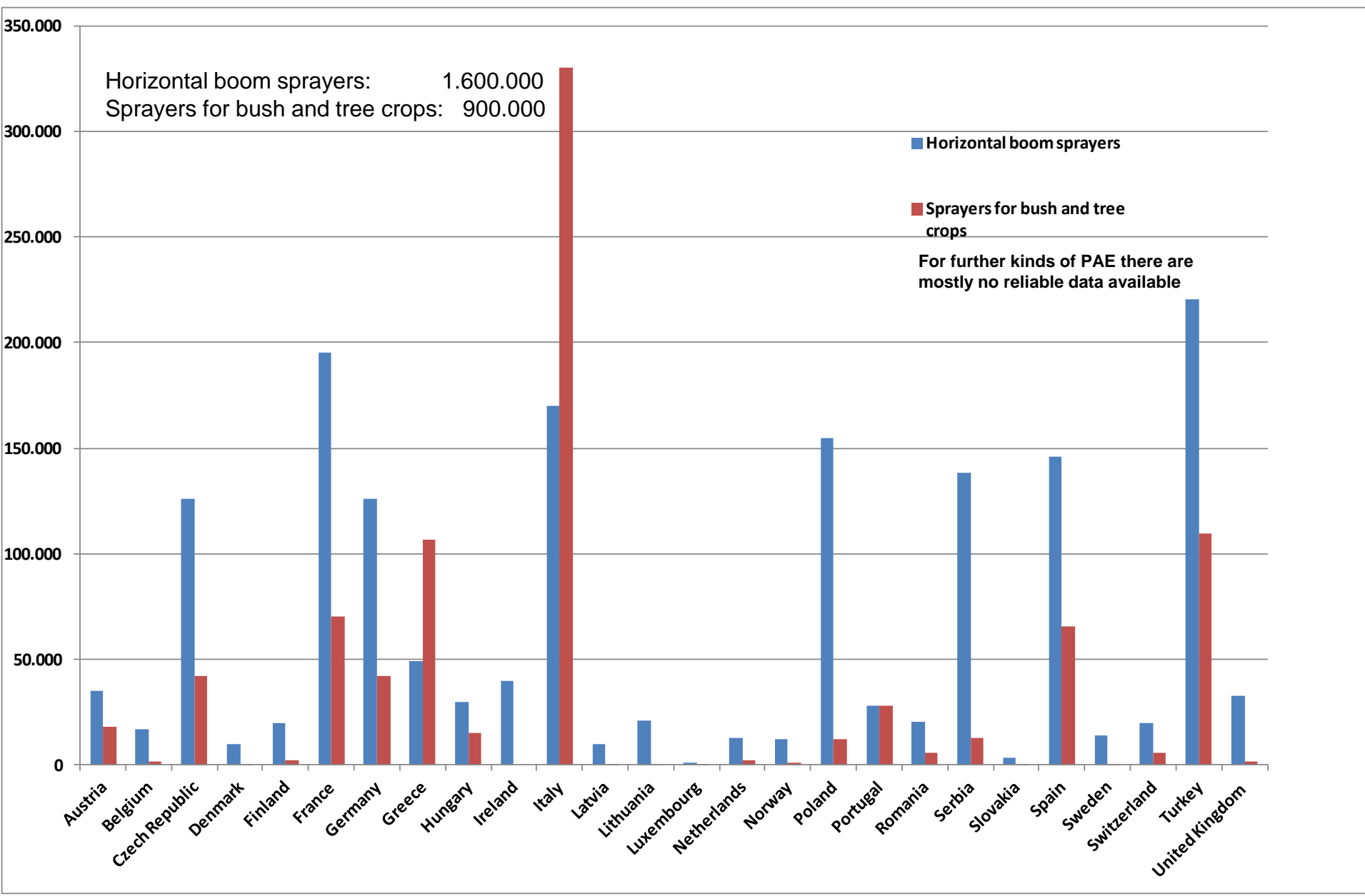


SPISE 6

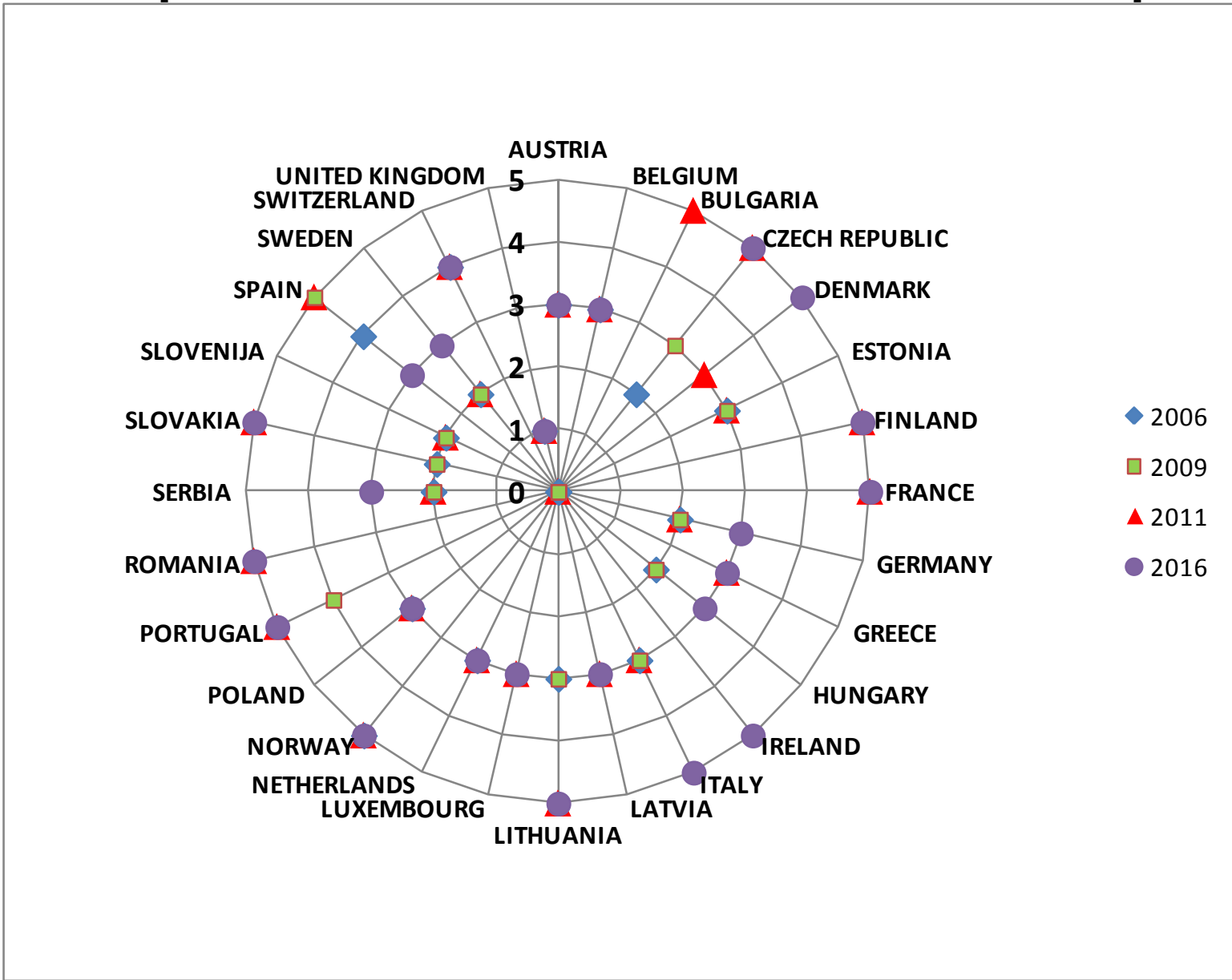
September 13-15, 2016

**Status Quo of inspection in Europe:
The results of a SPISE enquiry**
H.-J. Wehmann

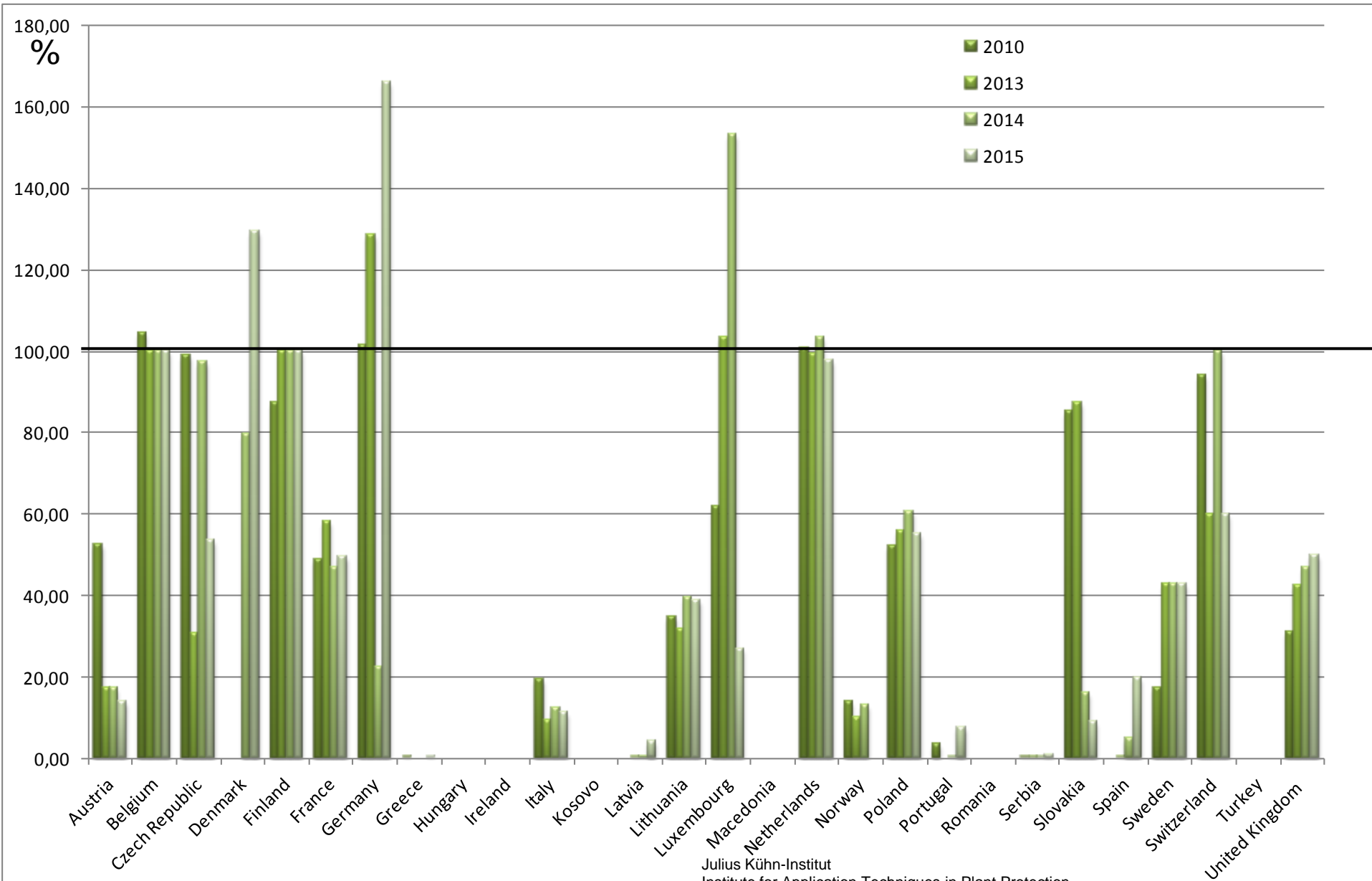
Number of sprayers in use (figures by estimation: 20, by register: 6)



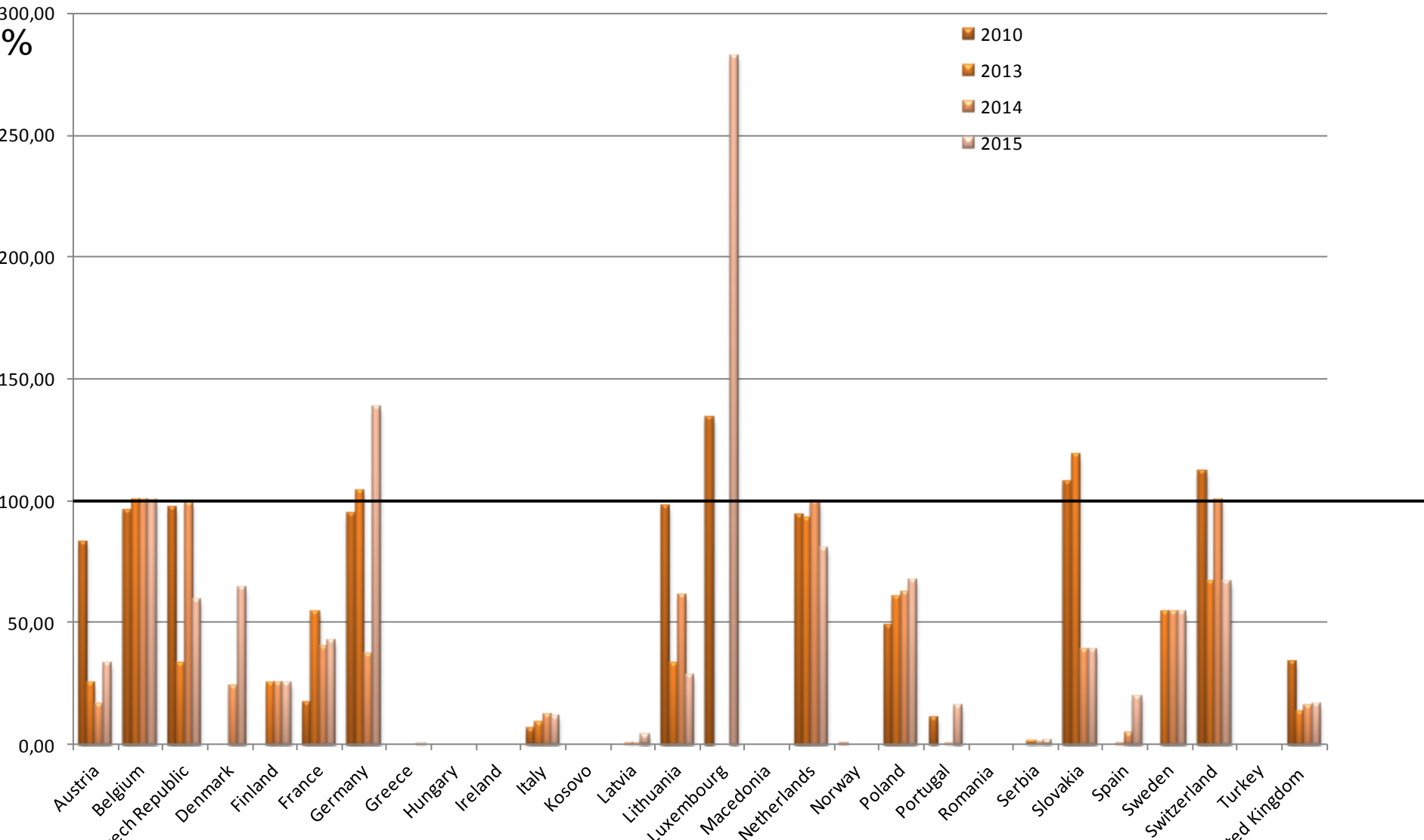
Inspection interval in the Countries in Europe



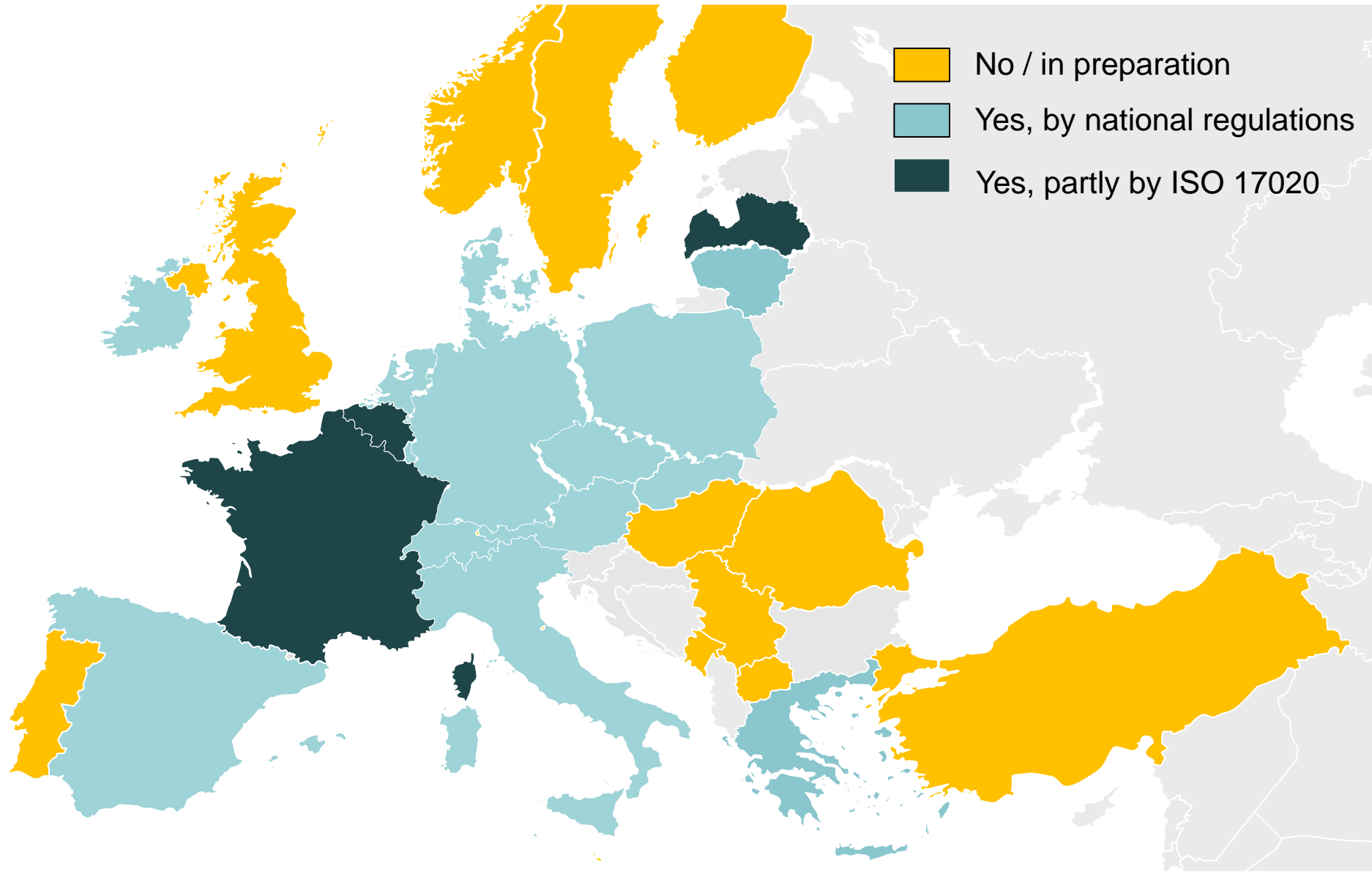
Yearly inspected field crop sprayers as percentage of yearly necessary inspections



Yearly inspected sprayers for bush and tree crops as percentage of yearly necessary inspections



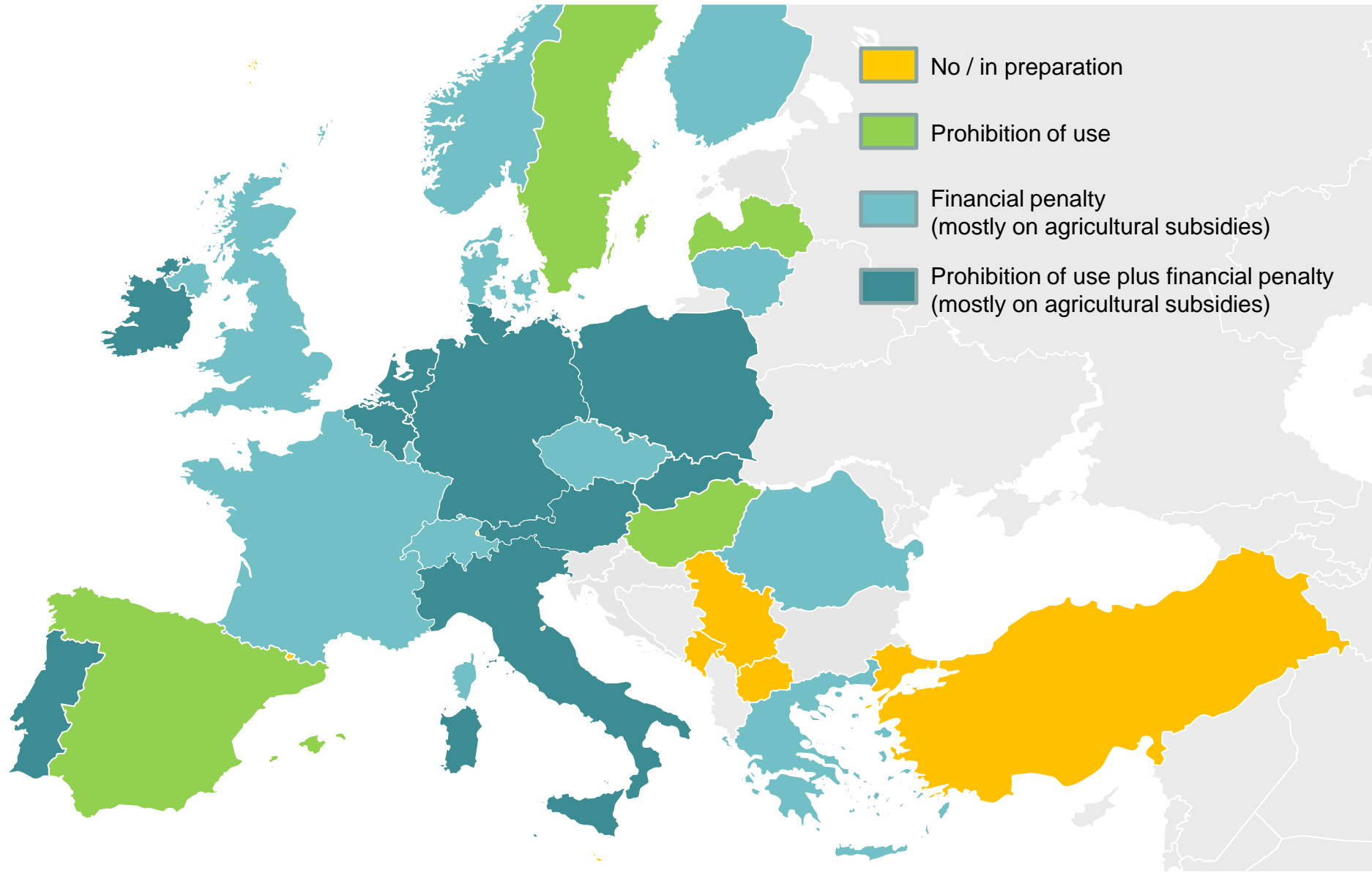
Are there certification systems regarding the quality control of inspections?



Are there definitions for a mutual recognition with other MS



Penalty if PAE – owner do not respect the deadline Nov. 2016 ?



For which kind of PAE a SPISE Advice is mostly needed?

